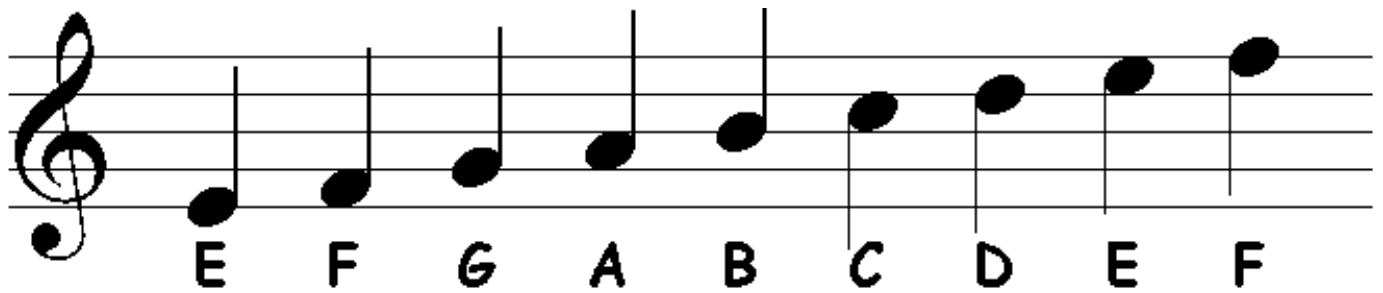


# How to read music

## Treble Clef

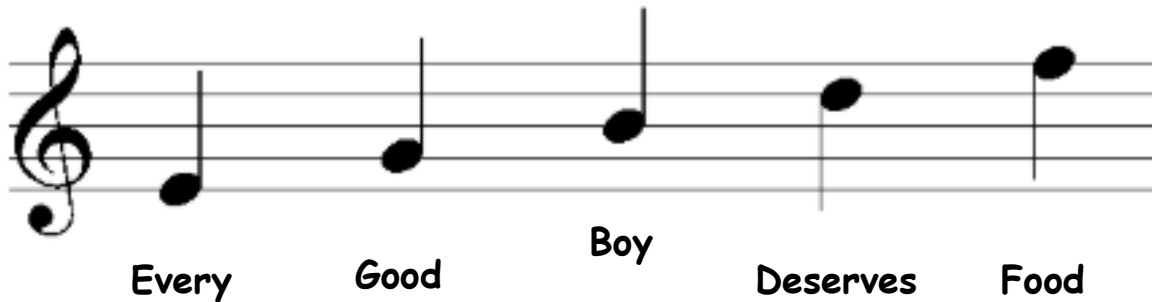


As notes go up the staff, they follow the order of "ABCDEFG-ABCDEFG"

There are only seven notes, and after "G" you start over again on "A"

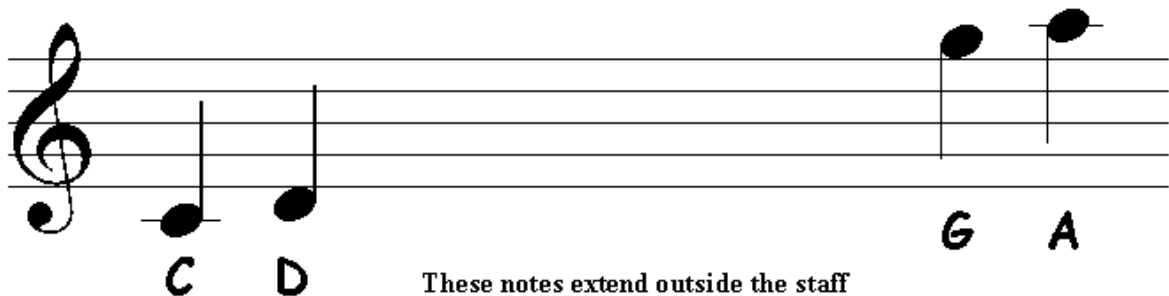
Alternate "Line-Space-Line-Space" as you move up the staff

Memorize that the bottom line is "E"... then you can figure out the rest



The spaces of the staff spell "FACE"

Memorize this code



The Famous "Middle C"

These notes extend outside the staff  
The "C" to the left is called "Middle C"  
It is the "C" in the middle of the piano  
On guitar, it is on the 5th string, 3rd fret